

61A Fulham High
Street
London
SW6 3JJ



61A Fulham High Street

£3,012

Positioned at the rear of the building, the property enjoys a peaceful setting away from the main road, offering a private living environment. The accommodation offers generous sized rooms throughout and comprises a bright living room with windows and door to patio, a spacious eat-in kitchen with modern units, two double bedrooms with fitted wardrobes, a well-appointed bathroom, and separate laundry cupboard.

A vibrant and highly desirable location, offering a blend of local convenience stores and just a short distance from Putney Bridge Station and local bus routes. Further local shops and restaurants are close by on Putney High Street and New King's Road. The area also benefits from access to scenic river walks, and the green spaces of Bishops Park, with various fitness and recreational facilities close by.

All measurements have been taken as a guide to prospective tenants only, and are not precise. Photographs are provided for general information, and it cannot be inferred that any item shown is included in any letting. Some images have been virtually staged to better showcase the true potential of rooms. If you require clarification or further information on any points, please contact us, especially if you are traveling some distance to view.

Local Authority

London Borough of Hammersmith and Fulham

Council Tax Band D

EPC Rating D



Contact

0208 994 5164

karen@xppm.co.uk

xppm.co.uk

Fulham High Street, SW6

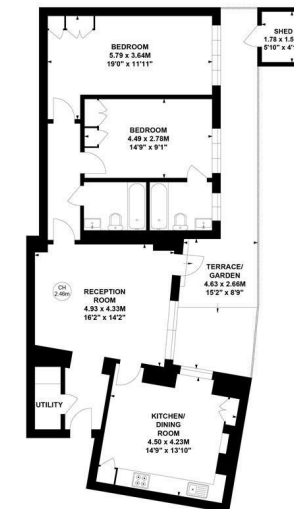
Approximate gross internal area

93.39 sq m / 1005 sq ft

(Including Shed)

Shed : 2.68 sq m / 29 sq ft

Key :
CH - Ceiling Height



Ground Floor

Not to scale, for guidance only and must not be relied upon as a statement of fact.
All measurements and areas are approximate only.